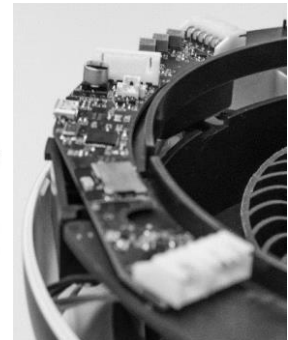
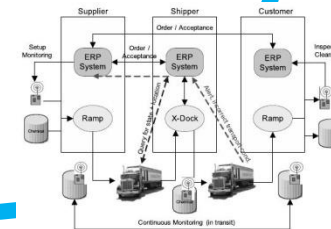
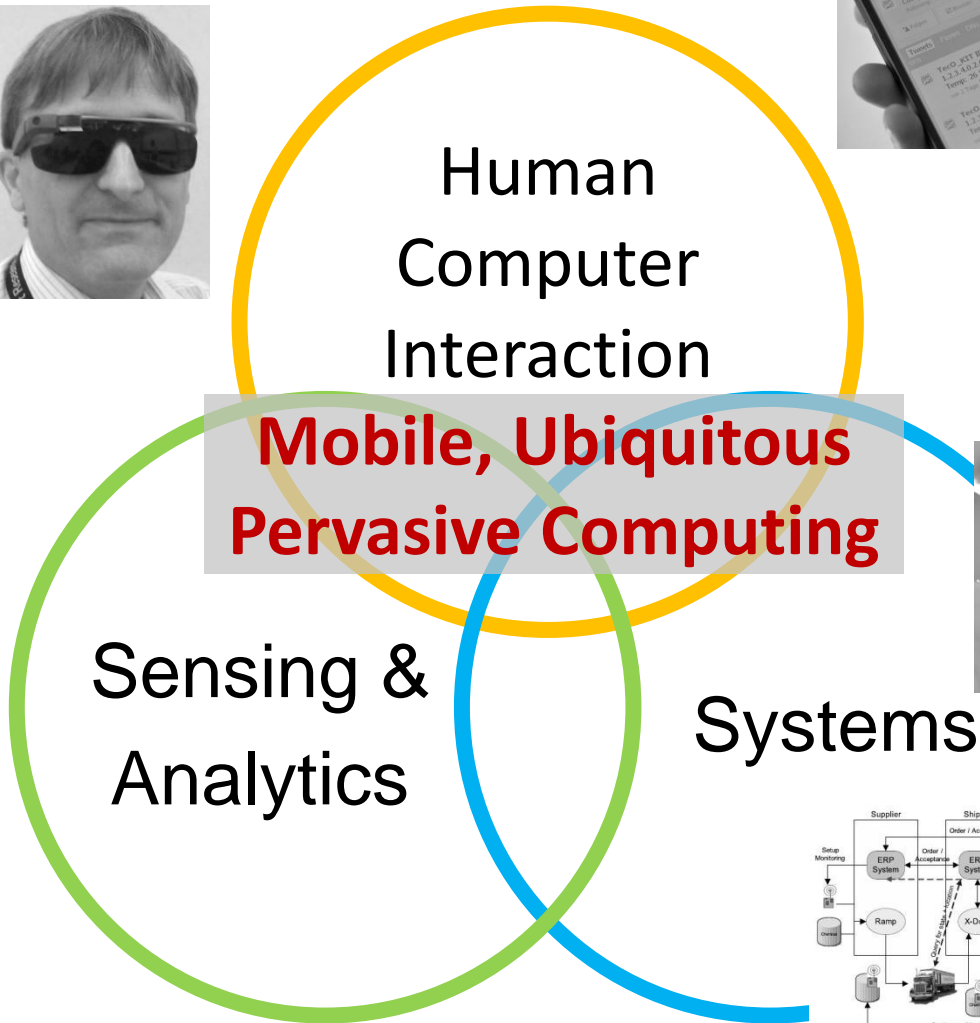
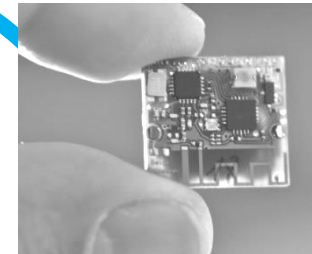
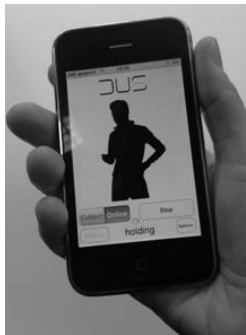
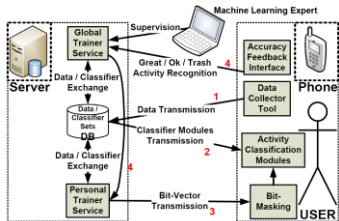
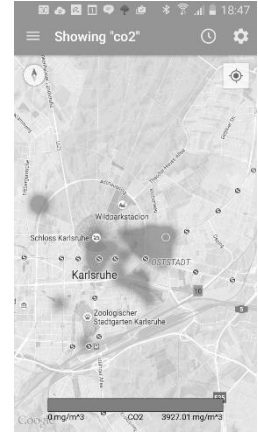
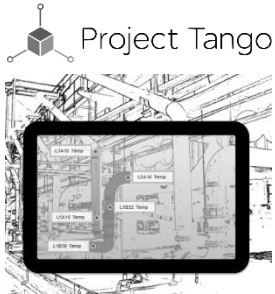


Pervasive Computing Systems



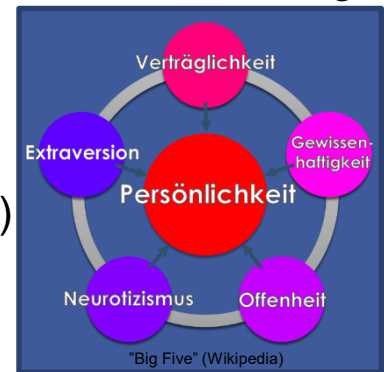
Pervasive Computing Systems



Themen im WiSe 2016/17

■ Mirror mirror on the wall, tell me what I'm looking for: Ontology-based user modeling for predicting users' intentions leading to proactive systems and services

- Intelligente Assistenten (e.g. Siri, Google now) zeichnen Daten zur Bereitstellung personalisierter Services auf
- Fokus auf Services basierend auf Persönlichkeitsmodell
- Bisher: alles supervised, inwiefern automatisch möglich?
- Use-case location tracking (Traces, Smartphone-Daten, Modell)
- Automatisch, unsupervised „Füllen“ des Modells
- Kontakt: *Antonios (Toni) Karatzoglou* (antonios@teco.edu)



■ Performantes, administrationsminimiertes Logging von un spezifizierten Logs für Internet der Dinge und Big Data

- Time Series-Daten von IoT-Apps
- Startpunkt ist bestehende Infrastruktur (momentan REST Gateway und INFLUX)
- Anforderungen: sehr gute allgemeine Programmierkenntnisse, Systemkenntnisse und Kenntnisse von Datenbanken bevorzugt.
- Kontakt: *Prof. Michael Beigl* (michael.beigl@kit.edu)