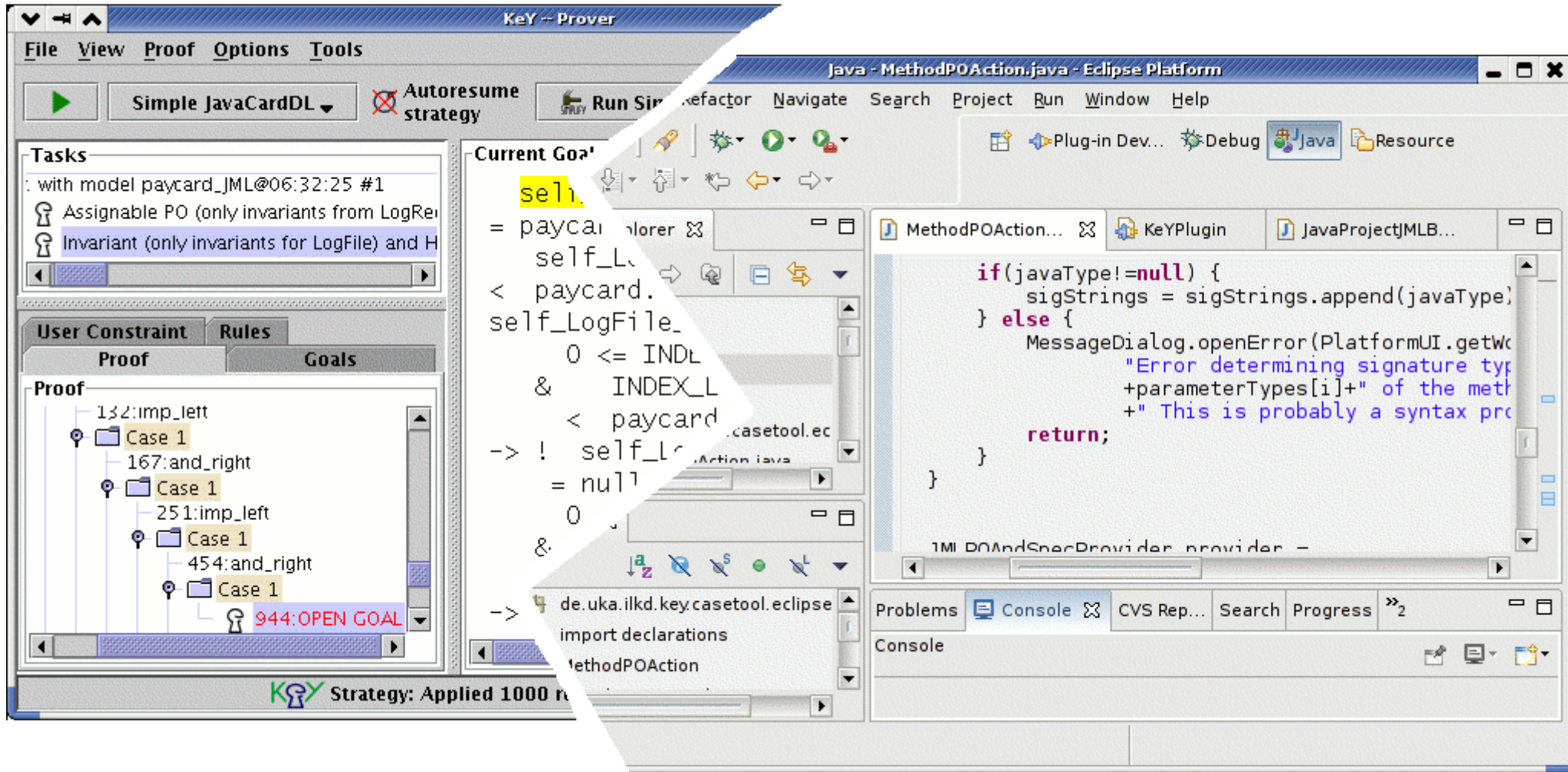


Eclipse plug-in for the JML interface



Marius Hillenbrand
ITI Karlsruhe

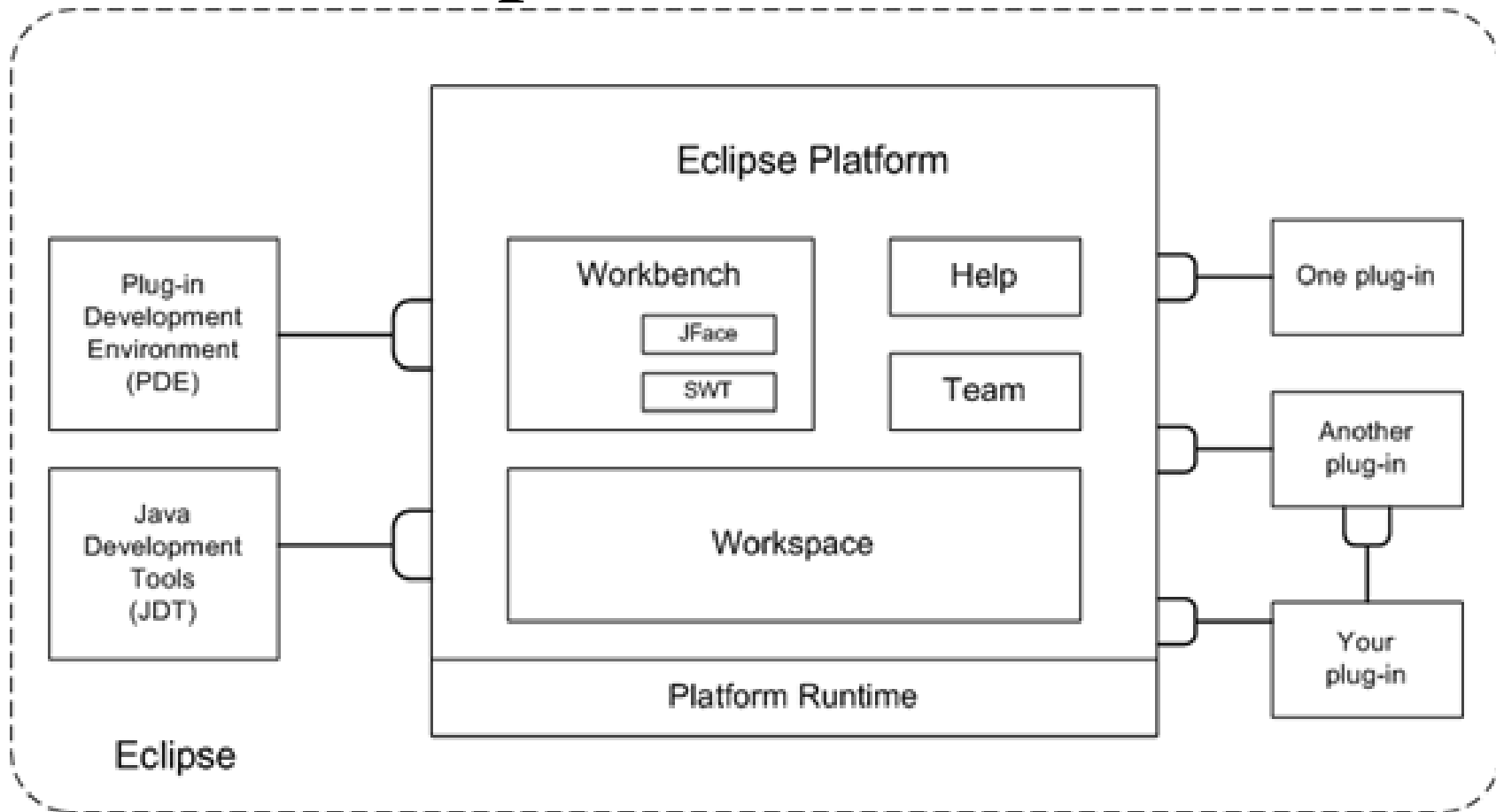


- it is THE modern IDE for Java
- provides powerful coding support like:
 - code templates, code completion
 - import management



- it is THE modern IDE for Java
- provides powerful coding support like:
 - code templates, code completion
 - import management
- well-documented plug-in interfaces
- freely available via eclipse.org
- => very popular and widely distributed

Eclipse Architecture



- everything is a plug-in
- plug-ins plug into other plug-ins' extension points

plug-in functionality

- JML Specification Browser currently entry point for JML input
- allow proof invocations from within Eclipse
 - allows development and proof launching in one place
 - entry in context menu pops up a selection dialog
- plug-in separated from KeY
 - only plug-in needs eclipse to build/run
 - core functionality stays independent of IDE

Working example: Proof Obligations for a method

- PayCard example from the JML quicktour
 - invoke proof of normal_behavior spec of `PayCardJunior.charge(int amount)` from within eclipse

future work

- clean up JML proof loading
 - separate specification model from user interaction
 - make the JML Specification Browser an (optional) view
- allow proof re-use with updated sources
- allow to start a proof from within the source code editor (identify spec by keywords)
- allow OCL specs, too (unify handling)